



SolarVENT®



Model # 70440 – Sunsei® SolarVENT® Marine
Model # 70441 – Sunsei® SolarVENT® Multi-Purpose

IMPORTANT: Please read the following instructions before operating your Sunsei® SolarVENT® unit.

Congratulations! You have just purchased ICP's premium solar/battery powered 24-hour Air Exchange ventilation unit. This wireless vent works all day and all night to circulate fresh air in boats, conservatories, greenhouses, sheds, cabins, RVs and campers. Installing the Sunsei® SolarVENT® is an ideal way to:

- Prevent mold and mildew
- Keep living areas comfortable
- Improve air quality

PRODUCT DESCRIPTION

Sunsei® SolarVENT® Marine – stainless steel cowl
Sunsei® SolarVENT® Multi-Purpose (clear, green & brown cowls)

Each Sunsei® SolarVENT® includes:

- Solar powered ventilator (Marine unit shown)
- Interior trim/mounting ring
- Watertight black rubber gasket
- Two (2) 2000mAmp NiMH AA batteries
- Six (6) stainless steel 1 3/4" (45mm) machine screws
- Six (6) screw spacers

IMPORTANT!

- DO NOT install the Sunsei® SolarVENT® in an area with more than 1/2" of camber (curvature) over a 12" length.
- Only use polyurethane adhesive sealants like 3M 5200® or Sikaflex® on plastic surfaces. DO NOT use polysulfide compounds, as they can melt plastic surfaces.
- DO NOT use NON-RECHARGEABLE batteries to run the Sunsei® SolarVENT®.

PRE-INSTALLATION

Before you start drilling holes or cutting out openings it is important to **selecting the best mounting location**. In order to get maximum potential air circulation it is important to position your solar ventilator in an unobstructed location that will receive good sunlight. Common mounting locations include boat hatches and decks, as well as roofs of conservatories, greenhouses, shed or campers. For permanent mounting on fixed structures, angle Sunsei® SolarVENT® in such a way that it will be facing the strong midday sun (southerly exposure in the Northern hemisphere, northerly exposure in the Southern hemisphere).

INSTALLATION

The Sunsei® SolarVENT® has the convenience of multiple mounting options, which make it easy to mount on almost any surface. Choose the installation that best applies to your application.

STANDARD INSTALLATION (for all surface materials)

Step 1 – Marking the hole

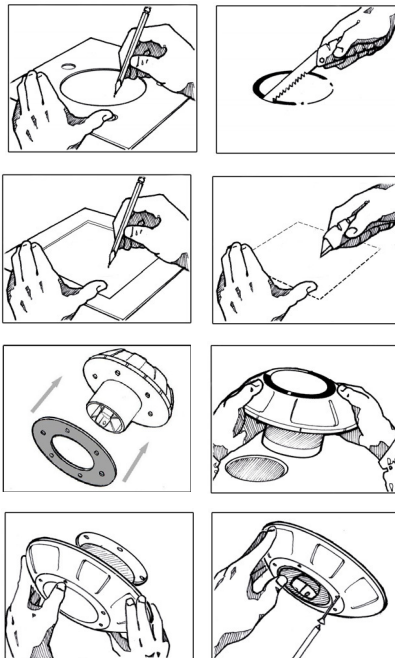
Round opening: Using the template included with the instructions (or the watertight gasket), draw a line around the large interior and outer screw holes with a marker or pencil.

Square opening: Using the template included with the instructions, trace the outline of the square.

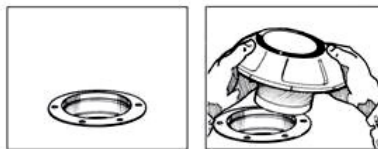
Sunsei® SolarVENT® components



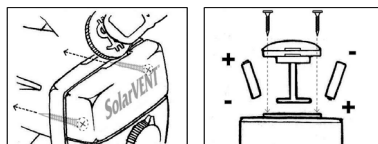
Standard installation



Deck plate installation



Installing the batteries



Step 2 – Cutting the hole

Round opening: Cut out the interior hole (4.75"/120 mm diameter) using a suitable tool. For wood, metal, fiber glass or acrylic use an electric jigsaw with a narrow blade. For soft polycarbonate use a hand-held fine tooth saw or utility blade. As for the screw holes, use a 3/8" drill bit. NOTE: It is also possible to cut out a larger interior hole in order to avoid having to drill out the screw holes. Use the larger circle in the template to make a hole around the exterior of the screw holes (5 3/4"/145mm diameter). This will allow the mounting screws to pass through the opening.

Square opening: Cut out the square hole (5 3/4" x 5 3/4" / 145mm x 145mm) using a suitable tool. This will allow for enough space to pass the mounting screws while keeping the unit watertight.

Step 3 – Installing the Sunsei® SolarVENT®

Place the gasket around the barrel of the Sunsei® SolarVENT®, aligning the 6 holes in the gasket with the 6 screw holes in the Sunsei® SolarVENT®. From the outside, place the Sunsei® SolarVENT® through the opening made in Step 2, keeping it well centered.

Step 4 – Installing the interior mounting ring to the Sunsei® SolarVENT®

From the inside, align the holes of the mounting ring with the holes in the Sunsei® SolarVENT® and gasket. Insert the included 1 3/4" / 45mm machine screws through the ring and into the Sunsei® SolarVENT®. Tighten using a hand-held screwdriver, enough so that the gasket is slightly compressed, providing a watertight seal. Do not over tighten to prevent distorting the vent or mounting ring. NOTE: when installing through a surface that is thinner than 1"/25mm, use the 6 screw spacers by placing them around the machine screws before installing the mounting ring.

MARINE DECK PLATE INSTALLATION

The Sunsei® SolarVENT® was also designed to retrofit standard 4" marine deck plates. This allows for an easy installation when replacing an existing solar or cowl vent.

Step 1 – Removing existing vent from the deck plate

Remove vent as per original manufacturer's recommendations.

Step 2 – Installing the Sunsei® SolarVENT® to the deck plate

Place the gasket around the barrel of the Sunsei® SolarVENT®. In this type of installation it is preferable NOT to align the screw holes of the gasket with those of the vent. Press the vent firmly into the deck plate until it is properly secured and the gasket is compressed between the vent and the deck plate. Rotating or twisting the vent into place might be necessary if it does not press easily into place.

INSTALLING OR REPLACING THE BATTERIES

After a few years of constant usage you may notice that your battery is no longer performing at peak performance (see Troubleshooting). The batteries are located in the center console. To remove the batteries, simply pry off the main center console cap by inserting a dime or flat-head screwdriver into the notch as indicated in the illustration, then unscrew the two small Philips head screws. Pull out the assembly which will expose the battery compartment. Remove the old batteries and install the new ones as indicated in the illustration.